

mitsubishi MGS SERIES

DIESEL GENERATOR SET

50Hz/1500 rpm/380V



MGS1400B

POWER RATING (0.8 P.F.)

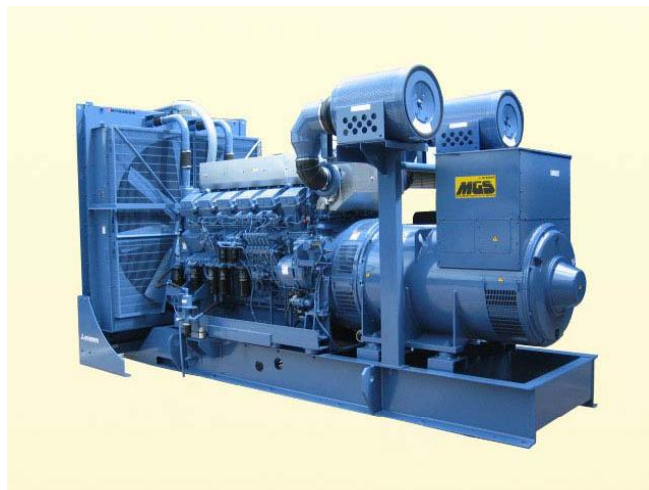
STAND-BY 1600 kVA

PRIME 1450 kVA

MODEL CODE

5S-7PD

5P-7PD



MGS1400B with typical options

Voltage Variation

- Standard Voltage 3Phase 4 Wires
380V
- Voltages Available 3Phase 4 Wires
380, 400, 415 and 440V

Note: Outputs for optional voltages may differ from standard output mentioned above.

CONDITIONS & DEFINITIONS

Stand-by: Code: S

Applicable for supplying emergency power at varying load in the event of the normal utility power interruption.

Fuel stop power in accordance with ISO15550, ISO3046/1, JISB8002-1, DIN6271 and BS5514.

Overload: not allowed

Prime: Code: P

Applicable for supplying emergency power at varying load in the event of normal utility power interruption. 10% overload is allowed.

Fuel stop power in accordance with ISO15550, ISO3046/1, JISB8002-1, DIN6271 and BS5514.

Overload: 10% allowed

Conditions:

Engine ratings are based on SAE J1349 standard conditions and also apply at ISO3046/1, DIN6271 & BS5514 standard conditions.

Fuel rates: based on ASTM D975, BS2869 and on fuel oil of 35° API (16°C or 60° F) gravity having a LHV of 42,780 kJ/kg (18,390 Btu/lb.) when used at 29°C (85° F) and weighing 838.9 g/liter (7.001lbs./U.S. gal.).

Note: * For conditions of prime power (P.R.P.) and additional rating requirements, please consult your nearest Mitsubishi MGS dealer.

DIMENSION (Reference Data)

Overall dimensions	L : Length	mm	4680
	W : Width	mm	2160
	H : Height	mm	2700
Total Weight (Dry)		kg	9800
Total Weight (Wet)		kg	10500